

ATLANTA POLICE DEPARTMENT
OFFICE OF PROFESSIONAL STANDARDS

ANNUAL REPORT - 2010



City of Atlanta Police Department
Office of Professional Standards
950 Joseph Lowery Blvd. Suit 16
Atlanta, Georgia 30318

Contact

Major Elder B. Dancy, Commander

Phone: (404) 658-6830

Fax: (404) 658-6430

www.atlantaga.gov

*This is an analytical report reviewing available data & evidence. Policy.
It is not a statement of Atlanta Police Department*



ATLANTA POLICE DEPARTMENT
OFFICE OF PROFESSIONAL STANDARDS
2010 ANNUAL REPORT



	2005	2006	2007	2008	2009	2010
CITIZEN	446	360	343	264	265	269
INTERNAL	468	576	425	482	299	406
TOTAL COMPLAINTS RECEIVED	914	936	768	746	564	675

	2005	2006	2007	2008	2009	2010
CLOSED FILES	914	935	766	743	550	623
OPEN FILES	0	1	2	3	14	52
TOTAL COMPLAINTS RECEIVED	914	936	768	746	564	675

	2005	2006	2007	2008	2009	2010
MEDIAN DAYS TO CLOSE FILES	43	101	171	223	241	172
AVERAGE DAYS TO CLOSE FILES	123	177	252	280	286	196

NOTE: IAPro data above was sorted by RECEIVED date.

	2005	2006	2007	2008	2009	2010
SUSTAINED*	321	369	295	360	236	395
NOT SUSTAINED*	232	214	190	208	148	207
DISMISSED*	0	4	1	2	3	5
EXCEPTIONALLY CLOSED*	31	35	37	36	48	32
EXONERATED*	130	119	96	105	95	118
UNFOUNDED*	8	8	6	8	13	11
GRAND TOTAL*	722	749	625	719	543	768

***NOTE: IAPro data above was sorted by COMPLETED date for all disposition files ONLY.**

PRIORITY 1						
	2005	2006	2007	2008	2009	2010
CR	5	6	16	11	10	15
CRD	1	10	6	6	8	5
CRSX	0	0	0	1	0	2
DV	0	0	17	12	12	10
FA	33	30	22	31	31	28
PS	10	4	6	8	5	7
SXM	2	1	6	4	4	5
UAF	68	74	84	54	70	75
TOTAL	119	125	157	127	140	147

PRIORITY 2						
	2005	2006	2007	2008	2009	2010
AT	26	31	15	22	4	12
CTSY	61	66	91	58	49	38
FTA	123	210	60	165	98	52
PE	30	22	24	27	26	18
SOP	87	84	81	124	92	118
VA	132	145	140	75	17	115
MISC	336	253	200	148	138	175
TOTAL	795	811	611	619	424	528
Grand Total	914	936	768	746	564	675

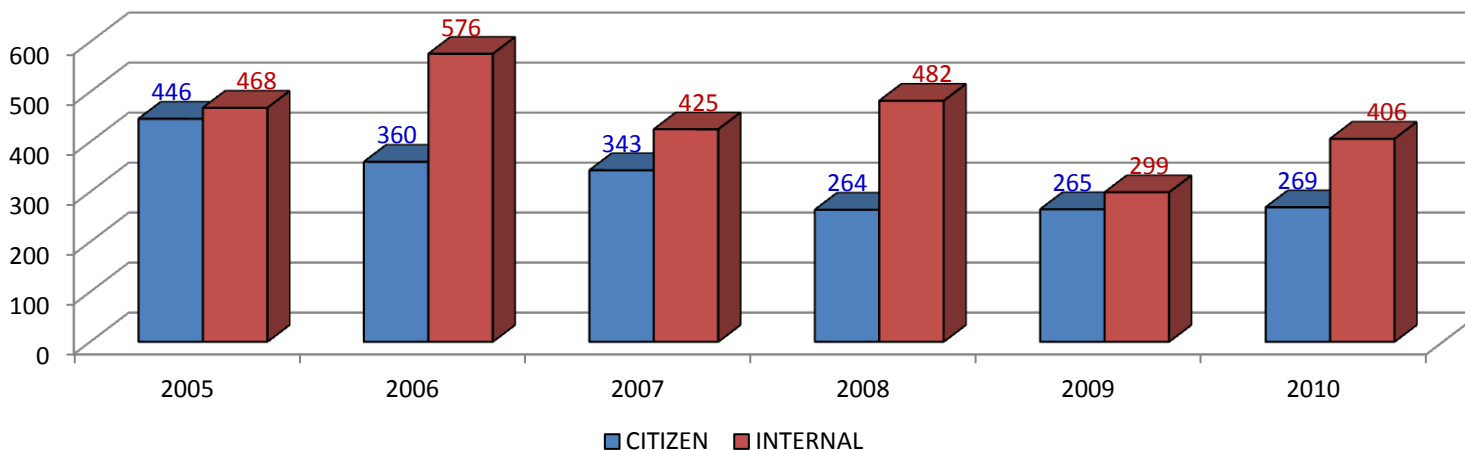
NOTE: IAPro data above was sorted by RECEIVED date.



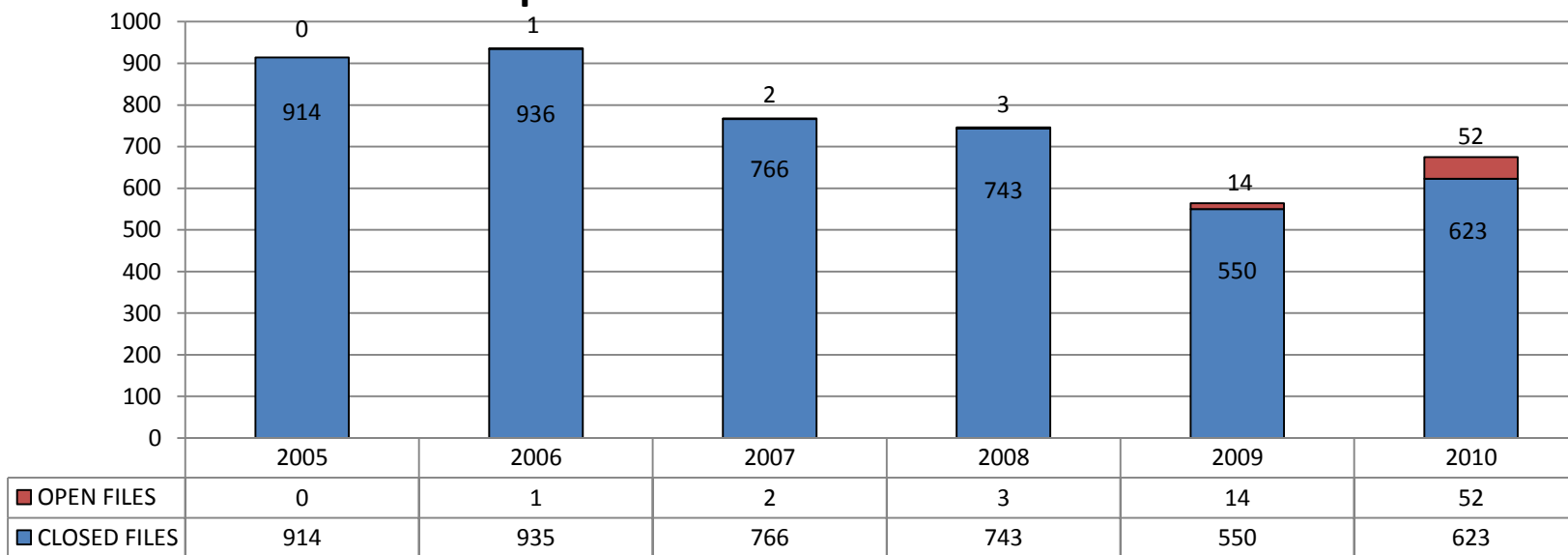
ATLANTA POLICE DEPARTMENT OFFICE OF PROFESSIONAL STANDARDS 2010 ANNUAL REPORT



Citizen vs Internal



Open Files vs Closed Files

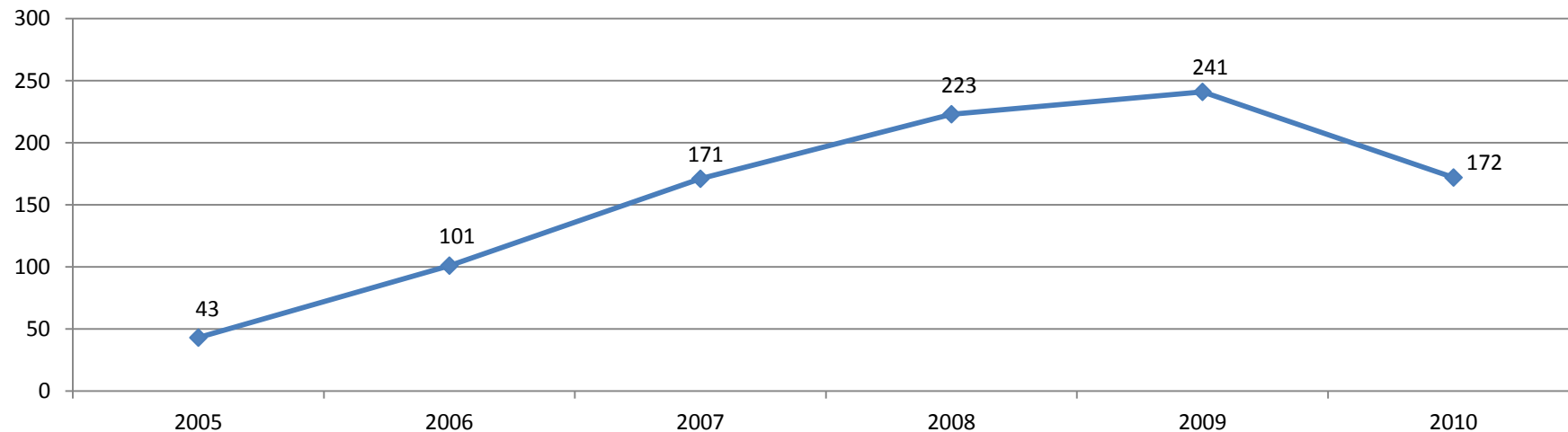




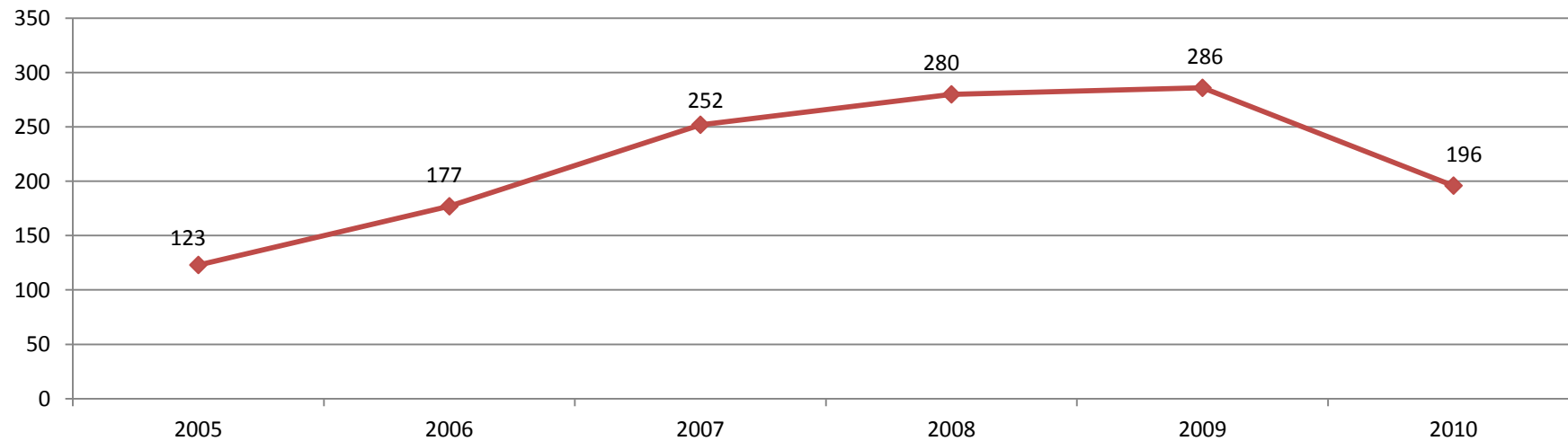
ATLANTA POLICE DEPARTMENT
OFFICE OF PROFESSIONAL STANDARDS
2010 ANNUAL REPORT



MEDIAN DAYS TO CLOSE FILES



AVERAGE DAYS TO CLOSE FILES





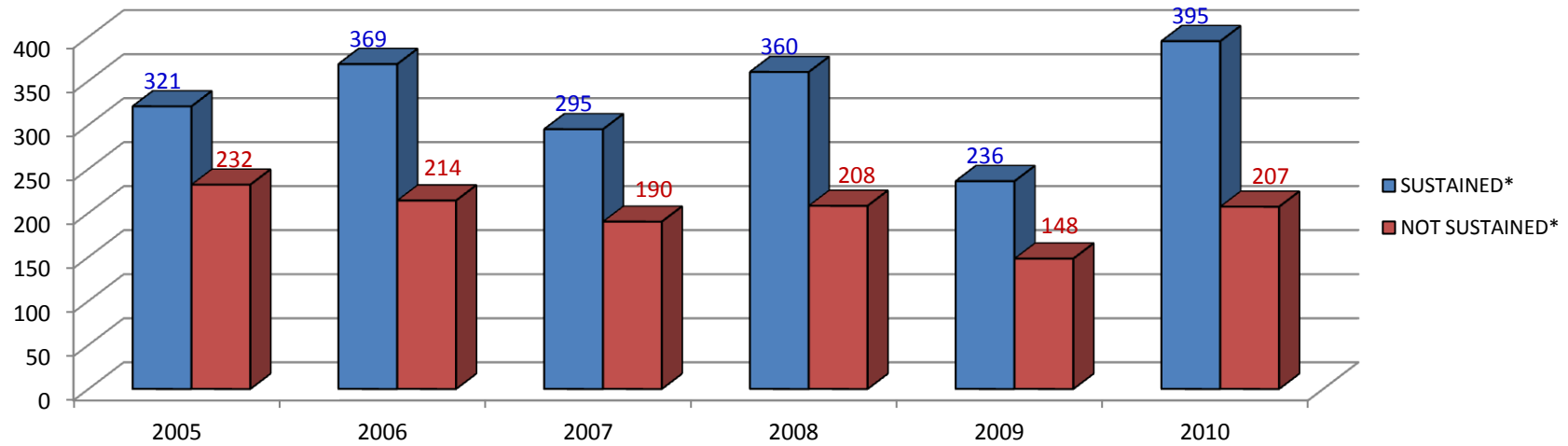
ATLANTA POLICE DEPARTMENT

OFFICE OF PROFESSIONAL STANDARDS

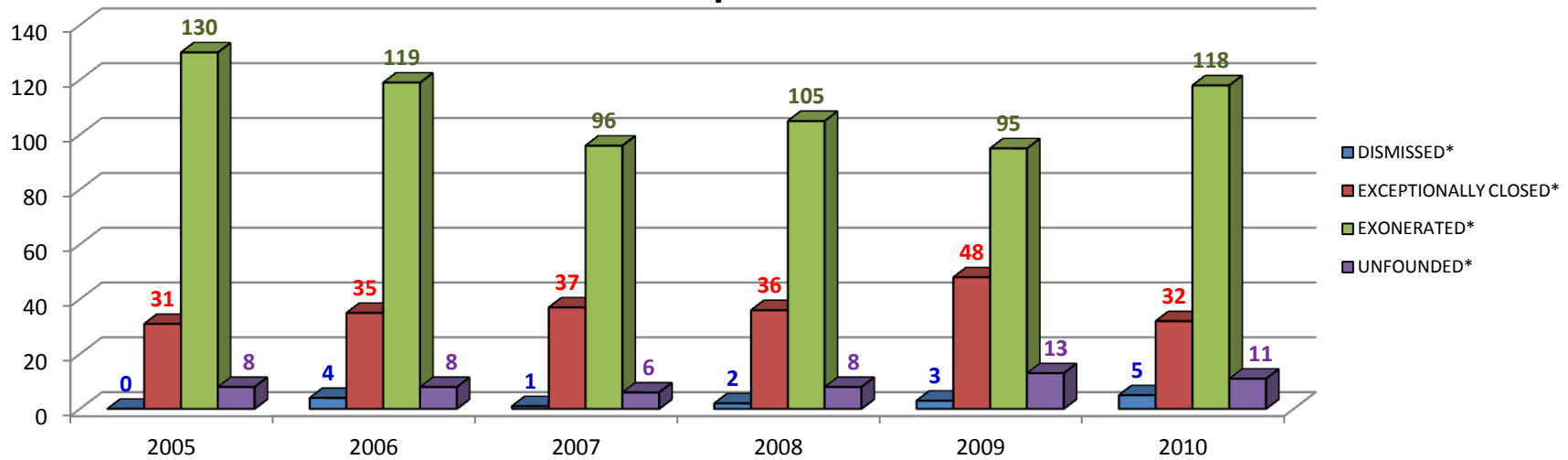
2010 ANNUAL REPORT



Sustained vs Not Sustained



Dispositions

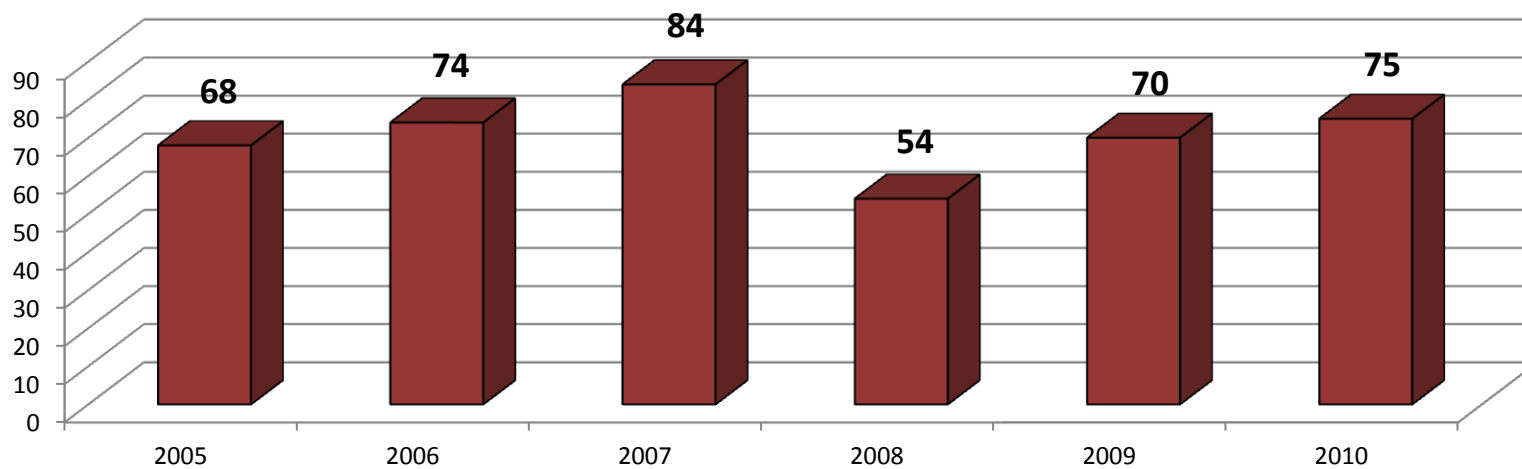




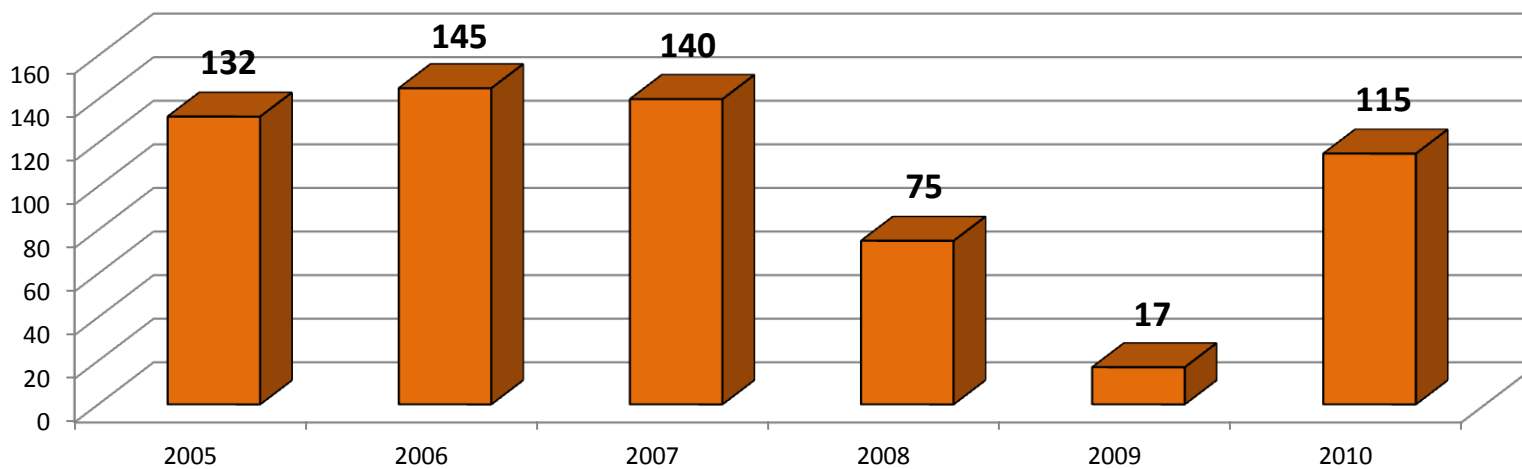
ATLANTA POLICE DEPARTMENT
OFFICE OF PROFESSIONAL STANDARDS
2010 ANNUAL REPORT



Unauthorized Force



Vehicular accident

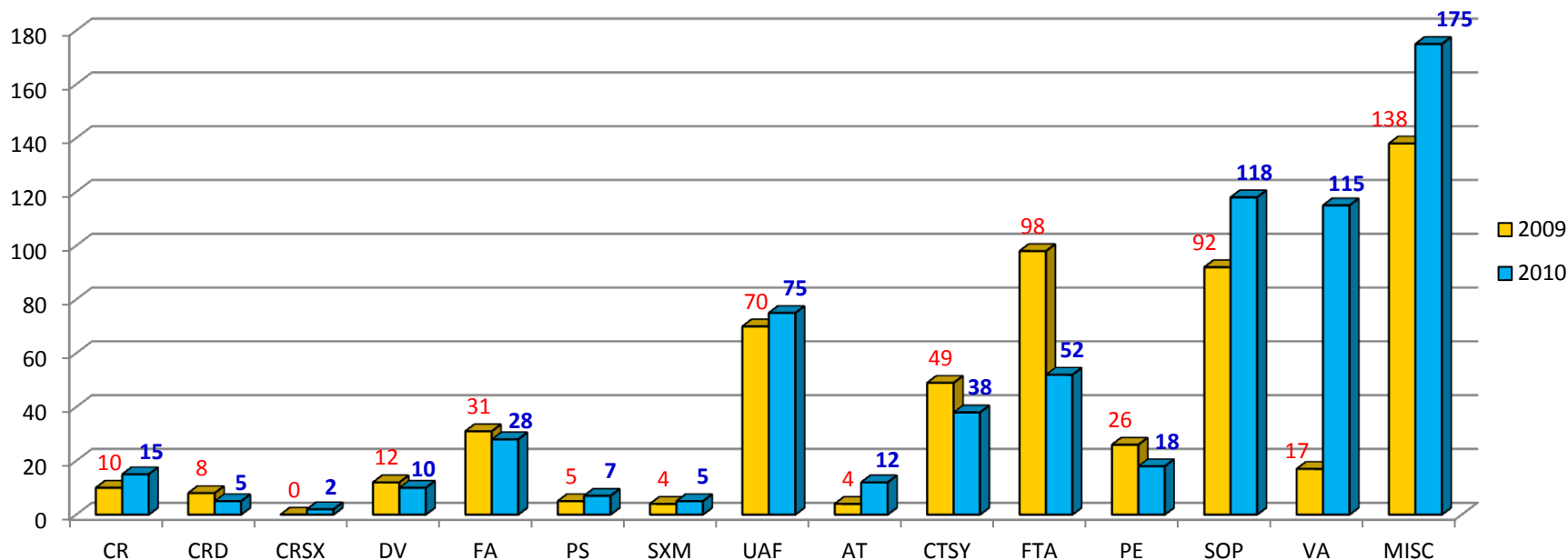




ATLANTA POLICE DEPARTMENT
OFFICE OF PROFESSIONAL STANDARDS
2010 ANNUAL REPORT



SUB-CLASSIFICATION



Legend Sub-Classifications

AT	ATTENDANCE	FTA	FAILURE TO APPEAR
CR	CRIMINAL MISCONDUCT	MISC	MISCELLANEOUS
CRD	CRIMINAL MISCONDUCT DOMESTIC	PE	PROPERTY & EVIDENCE
CRSX	CRIMINAL MISCONDUCT SEX CRIME	PS	PERSON SHOT
CTSY	COURTESY	SOP	STANDARD OPERATING PROCEDURE
DV	DOMESTIC VIOLENCE	SXM	SEXUAL MISCONDUCT NOT CRIMINAL
FA	FIREARM DISCHARGE	UAF	UNAUTHORIZED FORCE
		VA	VEHICLE ACCIDENT



ATLANTA POLICE DEPARTMENT

OFFICE OF PROFESSIONAL STANDARDS

2010 ANNUAL REPORT



Legend Disposition

Dismissal: The discharge, termination, or removal of an employee from employment with the City.

Exceptionally Closed: Reasons outside the Department's control prevent it from continuing or completing its investigation of a complaint, and/or from charging and prosecuting an accused employee when sufficient evidence exists to charge the accused employee. Examples may include: the employee resigns, dies, or is no longer employed by the Department.

Exonerated: The incident occurred but the employee's actions were justified, lawful, and proper.

Not-Sustained: There is insufficient evidence to sustain a finding that the employee committed the violation.

Sustained: The investigative file provides sufficient evidence to support the finding that the employee committed the violation.

Unfounded: Complainant admits to false allegation, the charge is false or not factual, or the accused employee was not involved in the incident.

Under Investigation: The Incident is currently open under investigation.